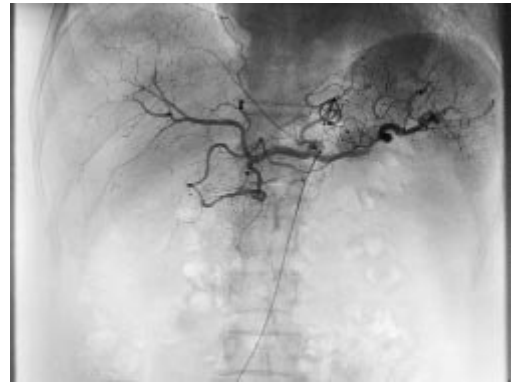
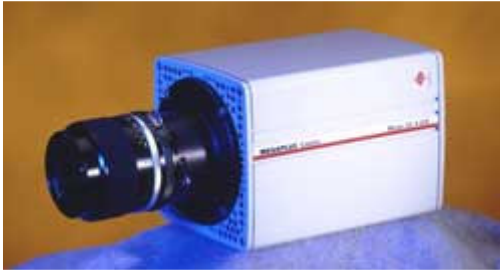


## ///MegaPlus® ES4.0/E



The MegaPlus® ES4.0/E provides the highest image quality and sensitivity to be found in any 4-megapixel camera on the market today.

The MegaPlus® ES 4.0/E offers the following:

- Four megapixels of high quality image with 12-bit progressive scan readout at 15 fps giving you the power to see fine detail and increase throughput for your application.
- Pixel-by-pixel calibration providing low noise output with consistently uniform response across the image.
- Highly linear response to the input illumination for applications that require quantifiable behavior from the camera such as display panel inspection.
- Camera Link™ option.
- Remote control software and a straightforward interface that allows direct control over all camera functions.
- Electronic Shutter, 98 micro-seconds to 64.9 ms in dual channel, full resolution and continuous mode operation.

### **MegaPlus ES4.0/E Applications:**

- Digital radiography
- Flat panel display inspection
- Research, design and test